



Full range
cover

ATLAS SP



Green energy
drive & control
system



Customised
cabins



High level
security system



Premium quality

Passenger Lifts



KLEEMANN
Your 1st Choice in Lifts



Our story & heritage

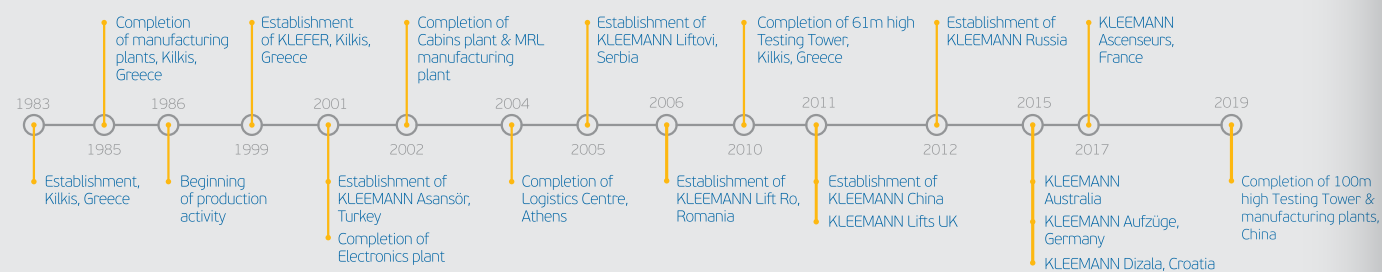
Founded in 1983 in Kilgis, Greece, KLEEMANN is one of the major lift companies in the European and global market, providing any type of residential or commercial passenger and freight lifts, escalators, moving walks, accessibility and marine solutions, parking systems and components.

Its distribution network expands to more than 100 countries.

KLEEMANN stands for innovation in design and technology, for flexibility and pragmatic thinking, for quality products and dedicated service and support.

Integrated manufacturing facilities, highly trained workforce and state-of-the-art IT systems and logistics support enable KLEEMANN to deliver reliable, highly personalised solutions, whatever the challenge.

KLEEMANN timeline



WE ARE THE GLOBAL
LIFT SUPPLIER WITH
WIDE PRODUCT RANGE



WE ARE EXPERTS
IN SPECIAL PROJECTS



WE OFFER
WORLD CLASS
DESIGN



Development in China

KLEEMANN China was
founded in Kunshan in

2011

The tower raises at

100
meters height

Premium quality according to

European
standards

Gross floor area of the building

19,300

square meters (production, logis-
tics, offices and testing tower)

Manufacturing capacity

5500

units/year

Global sourcing and worldwide
funneling under product quality
control, compliant with

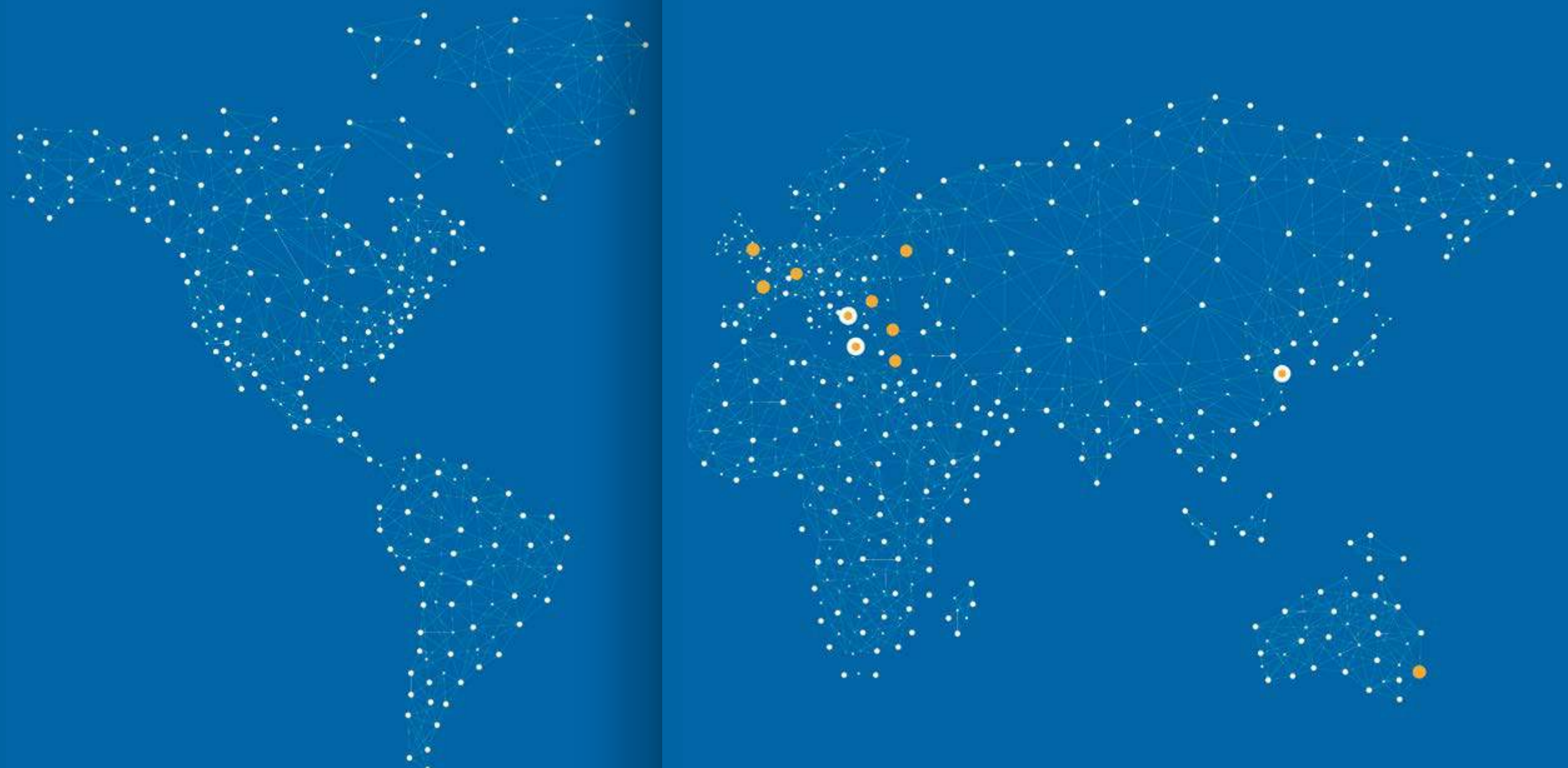
EN81.1/
EN81.20



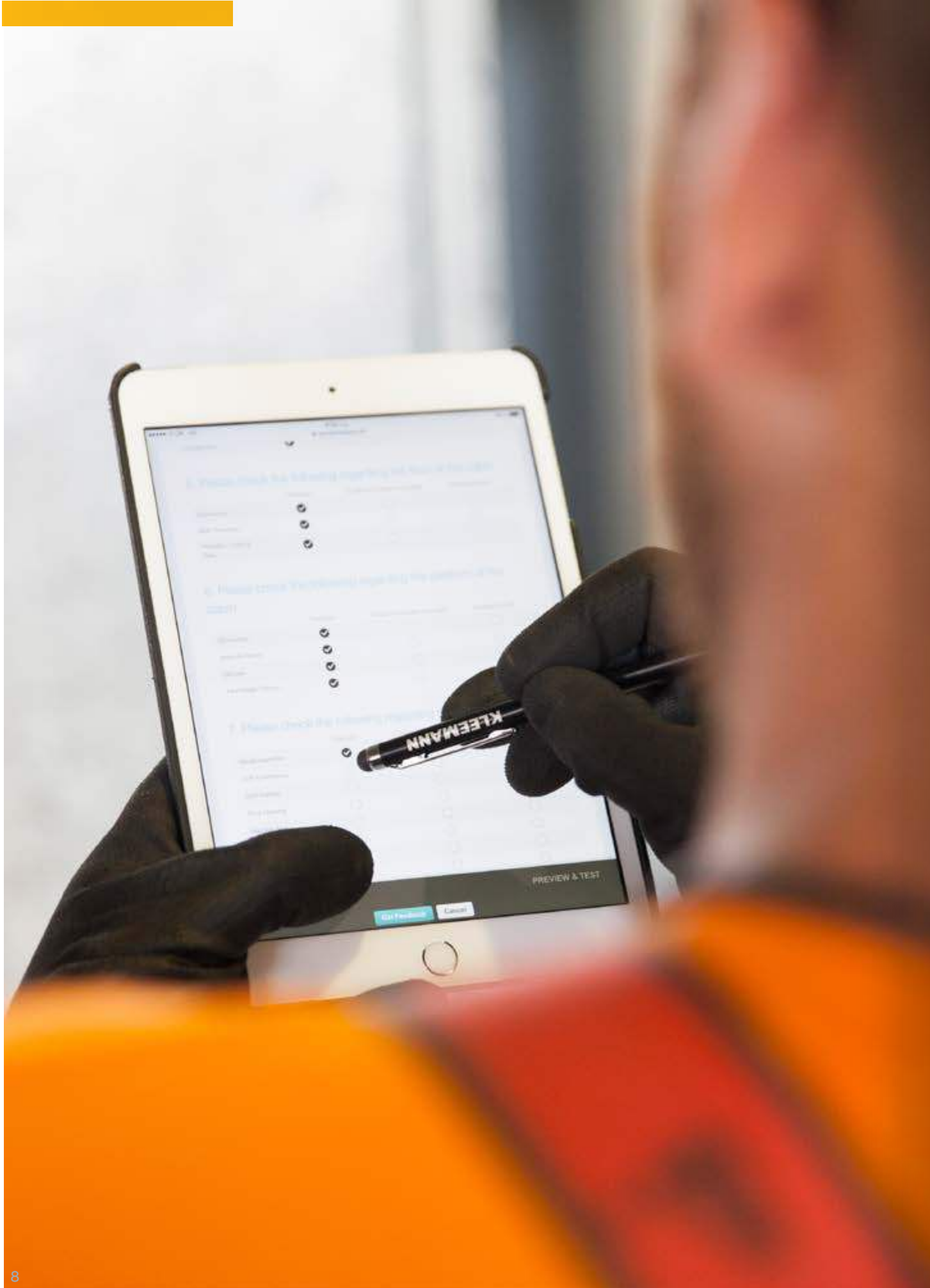
Global perspective

We expand in
more than
100
countries around
the world

KLEEMANN Group facilities
cover an area of 255.000 m²
in land and 140.000 m²
in buildings globally.



● MANUFACTURING FACILITIES ● LOCAL PRESENCE



Outstanding ride quality

Atlas is designed to deliver both premium quality and exceptional ride comfort. Low noise levels and minimal vibrations ensure a smooth and pleasant passenger experience.

Safety

Feel safe and secure with the guarantee of complete passenger safety.

Ease of installation

Designed for ease of installation and use, reliability and spatial efficiency.

Fast delivery

Place your order and enjoy prompt delivery.

24/7 Service

We support you 24/7 wherever you are.

Eco-Friendly

Regeneration systems are available to provide exceptional ride quality whilst reducing energy by up to 60%.

100% Quality Control

We control every step of the production procedure. Our unique control system safeguards the quality of our products and keeps efficiency and innovation in high levels.

Design

Unique tailor-made design options are customized according to your specific needs and the aesthetics of your space and building.





ATLAS BASIC SP

Technical Specifications



Rated Load (kg)	375-1000	
Suspension	2:1	
Machine room	MRL (MR)	
Max rated speed (m/s)	1.0/1.6	
Min pit depth (mm)	v≤ 1.0m/s 1010 v≤ 1.6m/s 1110	v≤ 1.0m/s 1000 v≤ 1.6m/s 1100
Min clear headroom (mm)	v≤1.0m/s 3400 v≤1.6m/s 3600	
Max entrances	2(Through)	
Panoramic option	Yes	
Type of machine	KLEEMANN RN	
Directives & Standards	EN81-1	EN81.20
With compensation chain addition 150mm to above min pit		

ATLAS RL SP

Technical Specifications

Rated Load (kg)	400-1000	
Suspension	2:1	
Machine room	MRL (MR)	
Max rated speed (m/s)	1.0/1.75	
Min pit depth (mm)	v≤ 1.0m/s 1150 v≤ 1.75m/s 1300	
Min clear headroom (mm)	v≤1.0 m/s 3400 v≤1.75m/s 3650	v≤1.0 m/s 3800 v≤1.75m/s 4065
Max entrances	2 (Through)	
Panoramic option	Yes	
Type of machine	KLEEMANN RN	
Directives & Standards	EN81-1	EN81.20



ATLAS GIGAS SP

Technical Specifications



Rated Load (kg)	1275 - 2500	
Suspension	2:1	
Machine room	MRL (MR)	
Max rated speed (m/s)	1.0/1.6/1.75	
Min pit depth (mm)	v≤1.0 m/s 1100 1.0<v≤1.6 m/s 1270 1.6<v≤1.75 m/s 1315	
Min clear headroom (mm)	v≤ 1.0m/s and Q≤1600 3635mm v≤ 1.0m/s and Q>1600 3750mm v≤ 1.6m/s and Q≤1600 3845mm v≤ 1.6m/s and Q>1600 3960mm v≤ 1.75m/s and Q≤1600 3905mm v≤ 1.75m/s and Q>1600 4020mm	v=1 m/s 3800 v=1.6m/s 4000 v=1.75m/s 4060
Max entrances	2 (Through)	
Panoramic option	Yes	
Type of machine	KLEEMANN RN	
Directives & Standards	EN81-1	EN81.20
	Cabin external height shall not exceed 2340mm Total height of the car bottom (car platform +MDF+ floor) shall not exceed 113mm.	Cabin external height shall not exceed 2340mm Total height of the car bottom (car platform +MDF+ floor) shall not exceed 100mm.



World class design

Since 2007, KLEEMANN has launched its creative research, in cooperation with the industrial designer Andreas Zapatinas. That was the beginning of a new era. Through this rewarding partnership, new technical and aesthetic solutions were explored and developed.

Inspired by human needs, KLEEMANN focuses on shaping new space qualities that lift the passenger's mood and stimulates interaction inside the elevator.



Our cabins

KLEEMANN Design is about life. Going far beyond the elevator design, KLEEMANN cultivates a whole design culture that elevates each and every aspect of its operation. It is a way of thinking, a mindset of innovation.

Rather than thinking of the elevator as a box, KLEEMANN Design thinks of it as a unique space in the building and transforms the whole elevator experience into a new value for the people, the building, the environment.



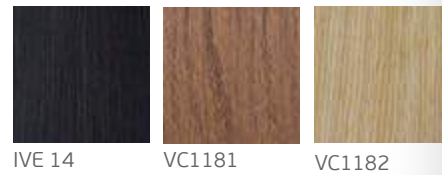
CLASSIC

A510 SP



WALL FINISHES

Wood veneers



Ceiling O14
Walls Wood veneer IVE 14
Corners-Skirtings Stainless steel mirror
Floor Artificial granite Regal white SP
Handrail K1
Mirror $\frac{3}{4}$ height / full width
Car Operating Panel KCH 1000

Colours may differ slightly from those shown in the manual owing to the limitations of the printing process.



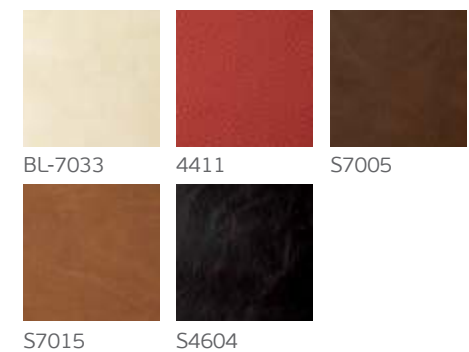
CLASSIC

A520 SP



WALL FINISHES

Artificial leather



Ceiling O3
Walls Artificial leather BL-7033
Corners-Skirtings Stainless steel mirror
Floor Rubber 2020T
Handrail K7
Mirror Full height / full width
Car Operating Panel KCH 1000

Colours may differ slightly from those shown in the manual owing to the limitations of the printing process.



CLASSIC A530 SP

WALL FINISHES Split panels



1635

Ceiling O3
Walls Split panel 1635
Corners-Skirtings Stainless steel mirror
Floor Artificial granite Regal white SP
Handrail K7
Mirror Full height / full width
Car Operating Panel KCH 1000

Colours may differ slightly from those shown in the manual owing to the limitations of the printing process.



CLASSIC A710 SP



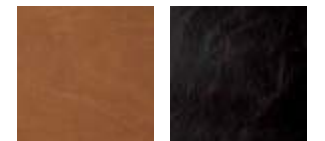
WALL FINISHES Artificial leather



BL-7033

4411

S7005



S7015

S4604

Ceiling A710
Walls Artificial leather S7005
Corners-Skirtings SStainless steel satin
Floor Laminate 8630
Handrail K7
Mirror Full height / half width
Car Operating Panel KCH 1000

Colours may differ slightly from those shown in the manual owing to the limitations of the printing process.

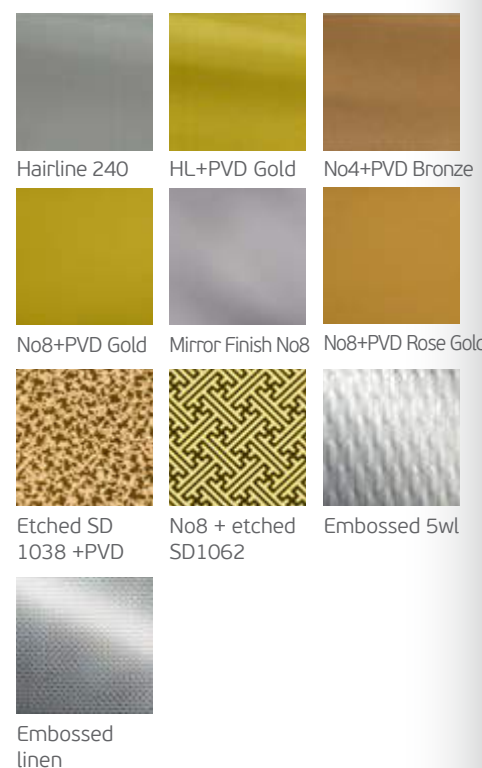
Panoramic



EN81.20

WALL FINISHES

Stainless steel



More options available.
Please contact your sales engineer.
Colours may differ slightly from those shown in the manual owing to the limitations of the printing process.



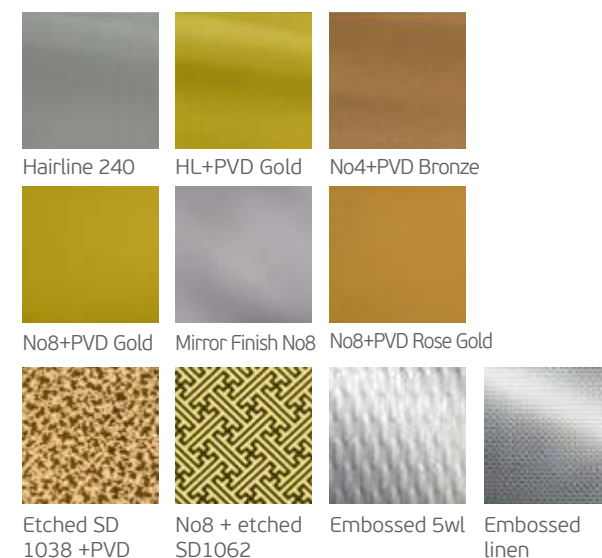
EN81.20

MODERN
LIFE

L310 SP

WALL FINISHES

Stainless steel



Ceiling O10
Walls Stainless steel
 hairline 240
Floor Rubber 2020T
Handrail K7
Mirror Half height / full width
Car Operating Panel KCH 1000

More options available.
Please contact your sales engineer.
Colours may differ slightly from those shown in the manual owing to the limitations of the printing process.



MODERN
LIFE

L330 SP

WALL FINISHES

Painting



德国劳尔色卡RAL

Ceiling O55
Walls RAL9010
Corners-Skirtings Stainless steel satin
Floor Rubber 2020T
Handrail K7
Mirror Full height / half width
Car Operating Panel KCH 1000

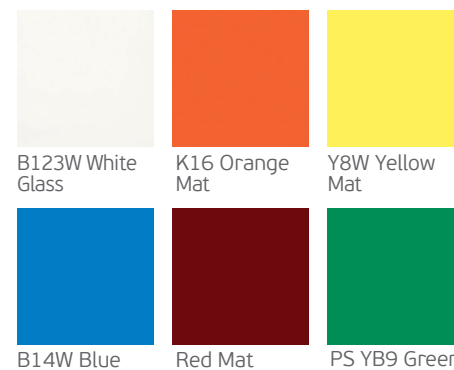
Colours may differ slightly from those shown in the manual owing to the limitations of the printing process

MODERN
LIFE

L510 SP

WALL FINISHES

Glasses



Ceiling O10
Walls B132W White glass
Corners- Skirtings Stainless steel satin
Floor Rubber 2020T
Handrail K2
Mirror Half height / full width
Car Operating Panel KCH 1000



EN81.20



EN81.20

MODERN
LIFE

L530 SP

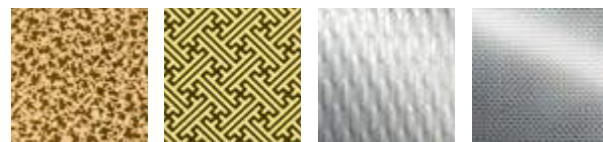
WALL FINISHES Stainless steel



Hairline 240 HL+PVD Gold No4+PVD Bronze



No8+PVD Gold Mirror Finish No8 No8+PVD Rose Gold



Etched SD 1038 +PVD No8 + etched SD1062 Embossed 5wl Embossed linen

Ceiling O14

Wall Mirror finish No8 (back)
- Stainless steel hairline 240 (sides)

Corners- Skirtings Mirror finish No8

Floor Laminate 8096

Handrail K7

Mirror Half height / full width

Car Operating Panel KCH 1000

More options available.
Please contact your sales engineer.

Colours may differ slightly from those shown in the manual owing to the limitations of the printing process.

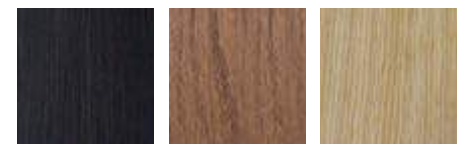


MODERN
LIFE

L710 SP



WALL FINISHES Wood veneers



IVE 14 VC1181 VC1182

WALL FINISHES Stainless steel



Hairline 240 HL+PVD Gold No4+PVD Bronze



No8+PVD Gold Mirror Finish No8 No8+PVD Rose Gold



Etched SD 1038 +PVD No8 + etched SD1062 Embossed 5wl



Embossed linen

Ceiling O14

Walls Stainless steel hairline 240 - wood veneer VC1182

Corners- Skirtings Hairline 240

Floor REGAL RED SP

Handrail K7

Mirror Half height / full width

Car Operating Panel KCH 1000

FUTURE
TREND

T110 SP



WALL FINISHES Melamines



Ceiling T110
Walls Melamine A402 SP
Door posts Stainless steel satin
Floor Artificial granite Regal white SP
Handrail K1
Mirror Full height / full width
Car Operating Panel KCH 1000

Colours may differ slightly from those shown in the manual owing to the limitations of the printing process

FUTURE
TREND

T120 SP



WALL FINISHES Melamines



Ceiling T120
Walls Melamine A378 SP
Door posts Stainless steel satin
Floor Artificial granite Regal white SP
Handrail K1
Mirror Full height / full width
Car Operating Panel KCH 1000



FUTURE
TREND

T710 SP



Ceiling detail

Wall finishes Painted RAL
Ceiling T710

More options available.
Please contact your sales engineer.
Colours may differ slightly from
those shown in the manual owing to
the limitations of the printing process.

EN81.20

FUTURE
TREND

T310 SP



EN81.20

Ceiling detail

Wall finishes Painted RAL
Ceiling T310

More options available.
Please contact your sales engineer.



Customised design

We have a passion to design cabins that combine innovation, class and functionality. With a solution-driven creative force, our highly specialised design team goes beyond standard, creating custom solutions even for the most challenging of your projects. Offering you flexibility and the best of design solutions, we work with you at all stages providing a totally elevated customer experience.

Work with our specialised design team to create the aesthetics of your ideal cabin

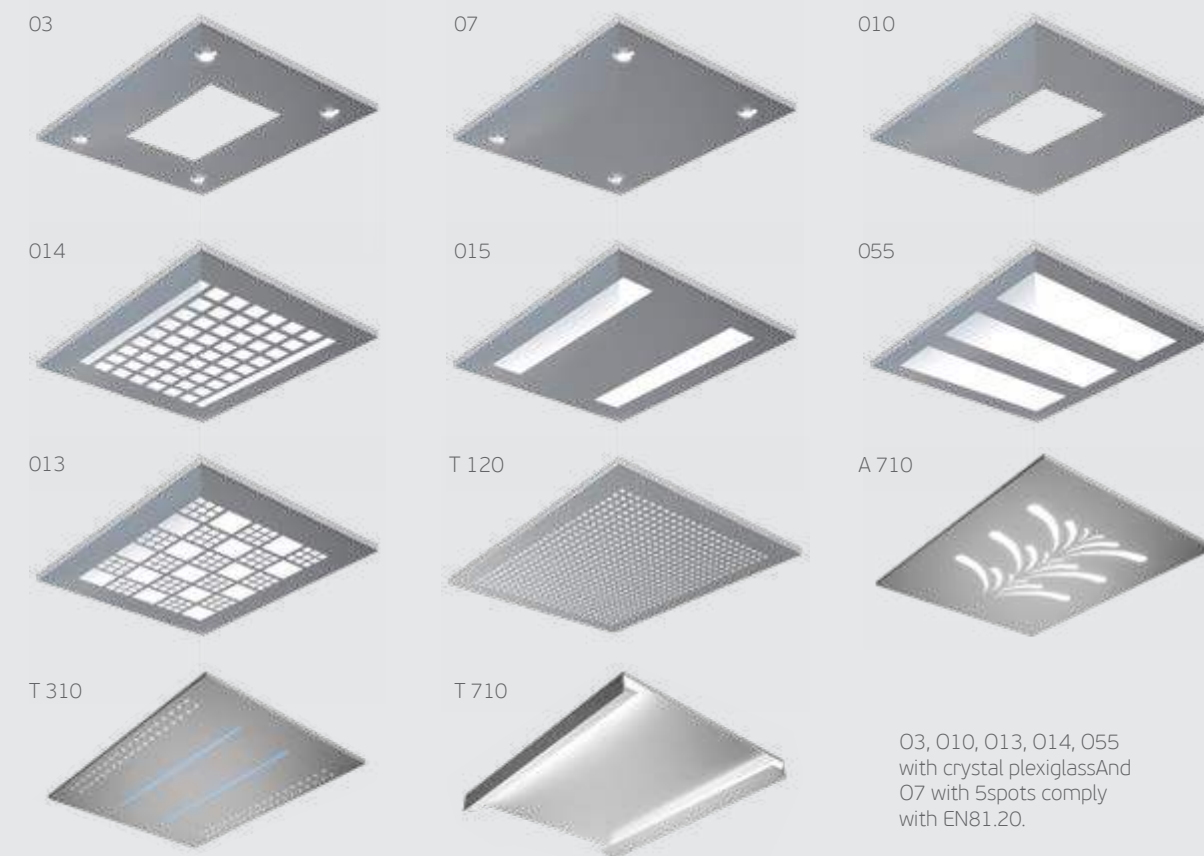




Interior Materials

Combine any colours, materials, lighting and fixtures from our ready-made design lines with numerous styles for walls, ceilings and floors.

Ceilings

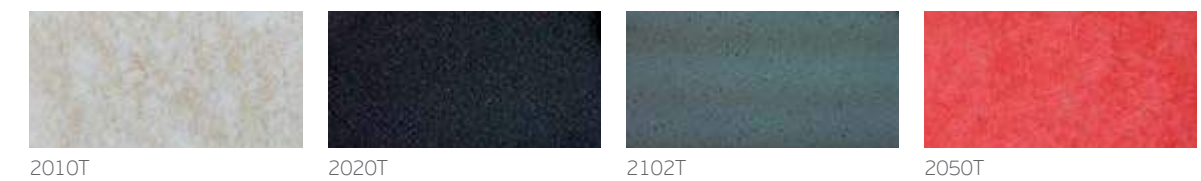


Handrails



Floors

Rubber



Artificial granites



Laminates



Cabin Operating Panels

Flush mounted



KCH
full height



KCH LCD Blue Line
full height



KCH TFT Blue Line
full height



KCH C300
3/4 height

Surface mounted



KCH SM BA SP
3/4 height



KCH 1000 SP
horizontal

Touch sensitive



KCH TSC Black
full height/
KCH TSC

Indicators

Flush mounted



LCH TFT



LCH LCD



LCH C300

Surface mounted

Landing Operating Panels

Flush mounted



LCH 102
Dot matrix



LCH 102
LCD



LCH 102
TFT



LCH C302



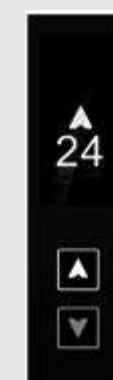
LCH C342

Surface mounted



LCH SM1

Touch sensitive



LCH TSL 102

Button



KLH-42R



KLH-42Q



EB960



EB218



Special Features

Magic Mirror *

The Magic Mirror is an LCD display, which is functioning as a normal display while it is activated and as a full mirror while it is deactivated.

The surface glass/mirror is constructed to be combined with the LCD display and it complies with the necessary surface, hardness and tension requirements.

***available only from Kleemann Greece**



Virtual Window

Virtual Window is one of the world's first immersive architecture & experience design elevator products. The display adapts the viewer's point of view in real time, according to the elevator's movement.

The patent pending Virtual Window software detects the movement of the elevator car - so it recognises whether it is stationary or moving, its direction, speed and location. This analysis is translated to the movement of the display's content.



Automatic Doors

Solutions for all dimensions, with wide range of options, easy to install and adjust.



Stainless Steel Satin



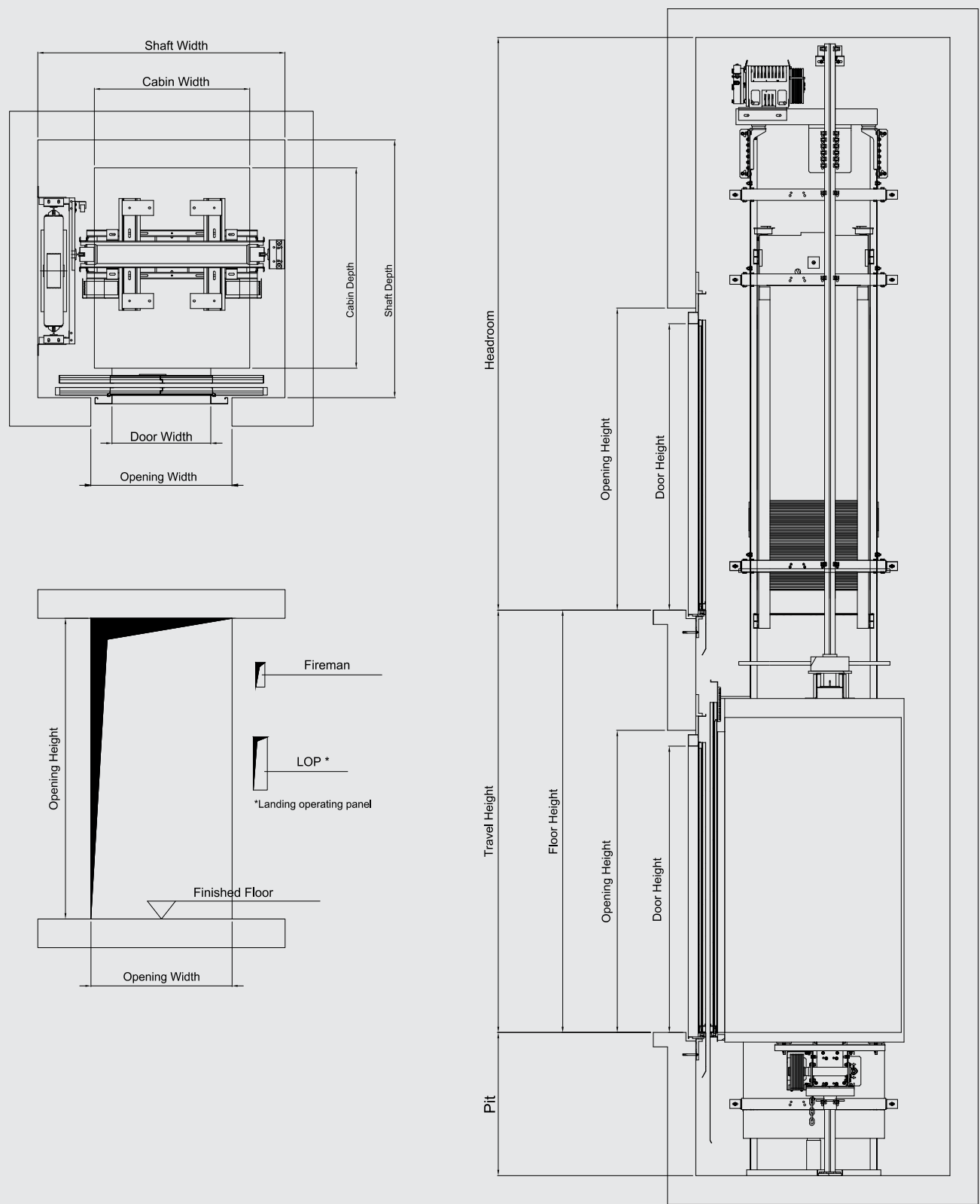
Big Vision



Full Glass



ATLAS BASIC SP



ATLAS BASIC SP

Person/ Rated Load (kg)	Car Dimen- sions (mm) CWxCD (mm)	Door CO (mm)	Loading Door Hole (mm)	Shaft Dimen- sions (mm) SW×SD (mm)	Max Rated Speed (m/s)	Door Height (mm)	Min Pit (mm)	Clear Headroom (mm)	Machine Room Height (mm)	Max Travel (m)	Max Stops	Max number of entrances
5/375	900X1150	SO:800	1100	1550*1530	1.6	2000	1m/s : 1000 1.6m/s : 1100	1m/s : 3400 1.6m/s : 3600	2100	45	20	2
5/400	900X1200	CO:700	1000	1600*1500	1.6	2000	1m/s : 1000 1.6m/s : 1100	1m/s : 3400 1.6m/s : 3600	2100	45	20	2
		SO:800	1100	1550*1580	1.6	2000	1m/s : 1000 1.6m/s : 1100	1m/s : 3400 1.6m/s : 3600	2100	45	20	2
6/450	1000X1250	SO:800	1100	1600*1630	1.6	2000	1m/s : 1000 1.6m/s : 1100	1m/s : 3400 1.6m/s : 3600	2100	45	20	2
8/630	1100X1400	SO:800	1100	1700*1780	1.6	2000	1m/s : 1000 1.6m/s : 1100	1m/s : 3400 1.6m/s : 3600	2100	45	20	2
		SO:900	1200	1700*1780	1.6	2000	1m/s : 1000 1.6m/s : 1100	1m/s : 3400 1.6m/s : 3600	2100	45	20	2
10/800	1350X1400	SO:900	1200	1950*1780	1.6	2000	1m/s : 1030 1.6m/s : 1130	1m/s : 3400 1.6m/s : 3600	2100	45	20	2
13/1000	1400X1600	SO:1000	1300	2000*1980	1.6	2000	1m/s : 1030 1.6m/s : 1130	1m/s : 3400 1.6m/s : 3600	2100	45	20	2
	1100X2100	SO:1000	1300	1850*2480	1.6	2000	1m/s : 1030 1.6m/s : 1130	1m/s : 3400 1.6m/s : 3600	2100	45	20	2
		SO:900	1200	1650*2480	1.6	2000	1m/s : 1030 1.6m/s : 1130	1m/s : 3400 1.6m/s : 3600	2100	45	20	2
	2100X1100	CO:1200	1500	2700*1400	1.6	2000	1m/s : 1030 1.6m/s : 1130	1m/s : 3400 1.6m/s : 3600	2100	45	20	2
		CO:1000	1300	2700*1400	1.6	2000	1m/s : 1030 1.6m/s : 1130	1m/s : 3400 1.6m/s : 3600	2100	45	20	2

For Min pit : 1.The load 375 < Q≤630kg, and the total height of the car bottom (car platform +MDF+ floor) shall not exceed 54mm.
2. The load 630 < Q≤1000kg, the total height of the car bottom (car platform +MDF+ floor) shall not exceed 92mm.
3. If there is a compensation chain Min pit+150mm
4. Speed governor KLEEMANN KLT-R (25kg) for EN81.20

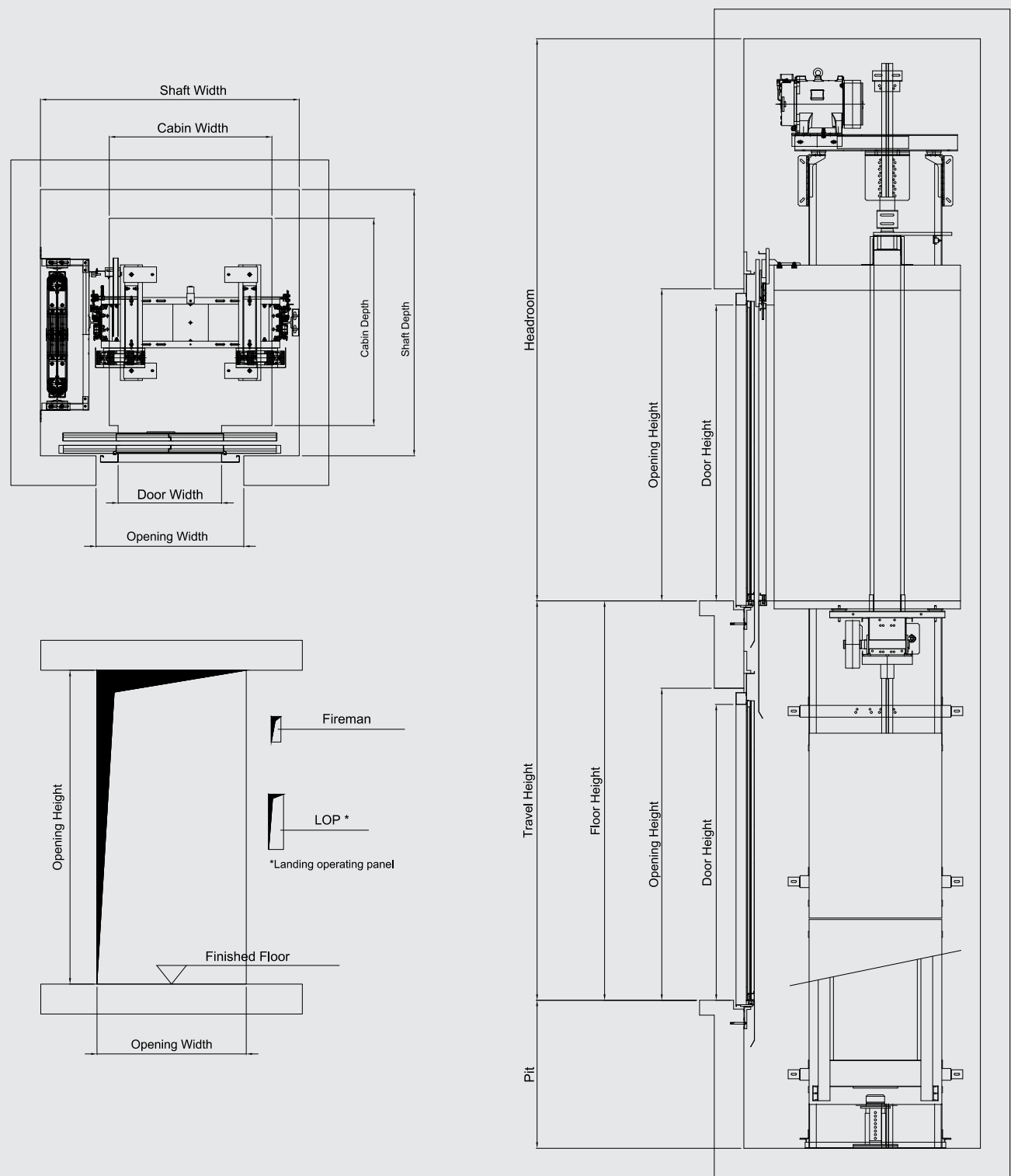
For Min clear headroom: 1. Load 375 < Q≤630kg, car internal height 2100mm, external height 2300mm, and the total height of the car bottom (car platform +MDF+ floor) shall not exceed 54mm.
2. Load 630 < Q≤1000kg, car internal height 2100mm high, external height 2340mm, the total height of the car bottom (car platform +MDF+ floor) shall not exceed 92mm.
3. Choose 700mm height baluster

Door: 1. CO= 2 Panel central open
2. SO= 2 Panel side open

Contact Kleemann Technology for more than the Max travel.
The above technical parameters are based on EN81.20



ATLAS RL SP



ATLAS RL SP

Person/ Rated Load (kg)	Car Dimen- sions (mm) CWxCD (mm)	Door CO (mm) (mm)	Loading Door Hole (mm)	Shaft Dimen- sions (mm) SW×SD (mm)	Max Rated Speed (m/s)	Door Height (mm)	Min Pi (mm)	Clear Headroom (mm)	Machine Room Height (mm)	Max Travel (m)	Max Stops	Max number of entrances
5/400	900x1200	CO:700	1000	1585X1500	1.75	2000	1m/s : 1150 1.75m/ : 1300	1m/s : 3800 1.75m/s : 4065	2100	80	30	2
		SO:800	1100	1565X1580	1.75	2000	1m/s : 1150 1.75m/ : 1300	1m/s : 3800 1.75m/s : 4065	2100	80	30	2
6/450	1000x1250	SO:800	1100	1670X1630	1.75	2000	1m/s : 1150 1.75m/ : 1300	1m/s : 3800 1.75m/s : 4065	2100	80	30	2
8/630	1100x1400	SO:800	1100	1750X1780	1.75	2000	1m/s : 1150 1.75m/ : 1300	1m/s : 3800 1.75m/s : 4065	2100	80	30	2
		SO:900	1200	1750X1780	1.75	2000	1m/s : 1150 1.75m/ : 1300	1m/s : 3800 1.75m/s : 4065	2100	80	30	2
10/800	1350x1400	SO:900	1200	2000X1780	1.75	2000	1m/s : 1150 1.75m/ : 1300	1m/s : 3800 1.75m/s : 4065	2100	80	30	2
13/1000	1400x1600	SO:1000	1300	2050X1980	1.75	2000	1m/s : 1150 1.75m/ : 1300	1m/s : 3800 1.75m/s : 4065	2100	80	30	2
	1100x2100	SO:1000	1300	1900x2480	1.75	2000	1m/s : 1150 1.75m/ : 1300	1m/s : 3800 1.75m/s : 4065	2100	80	30	2
		SO:900	1200	1700x2480	1.75	2000	1m/s : 1150 1.75m/ : 1300	1m/s : 3800 1.75m/s : 4065	2100	80	30	2
	2100x1100	CO:1000	1300	2765x1405	1.75	2000	1m/s : 1150 1.75m/ : 1300	1m/s : 3800 1.75m/s : 4065	2100	80	30	2

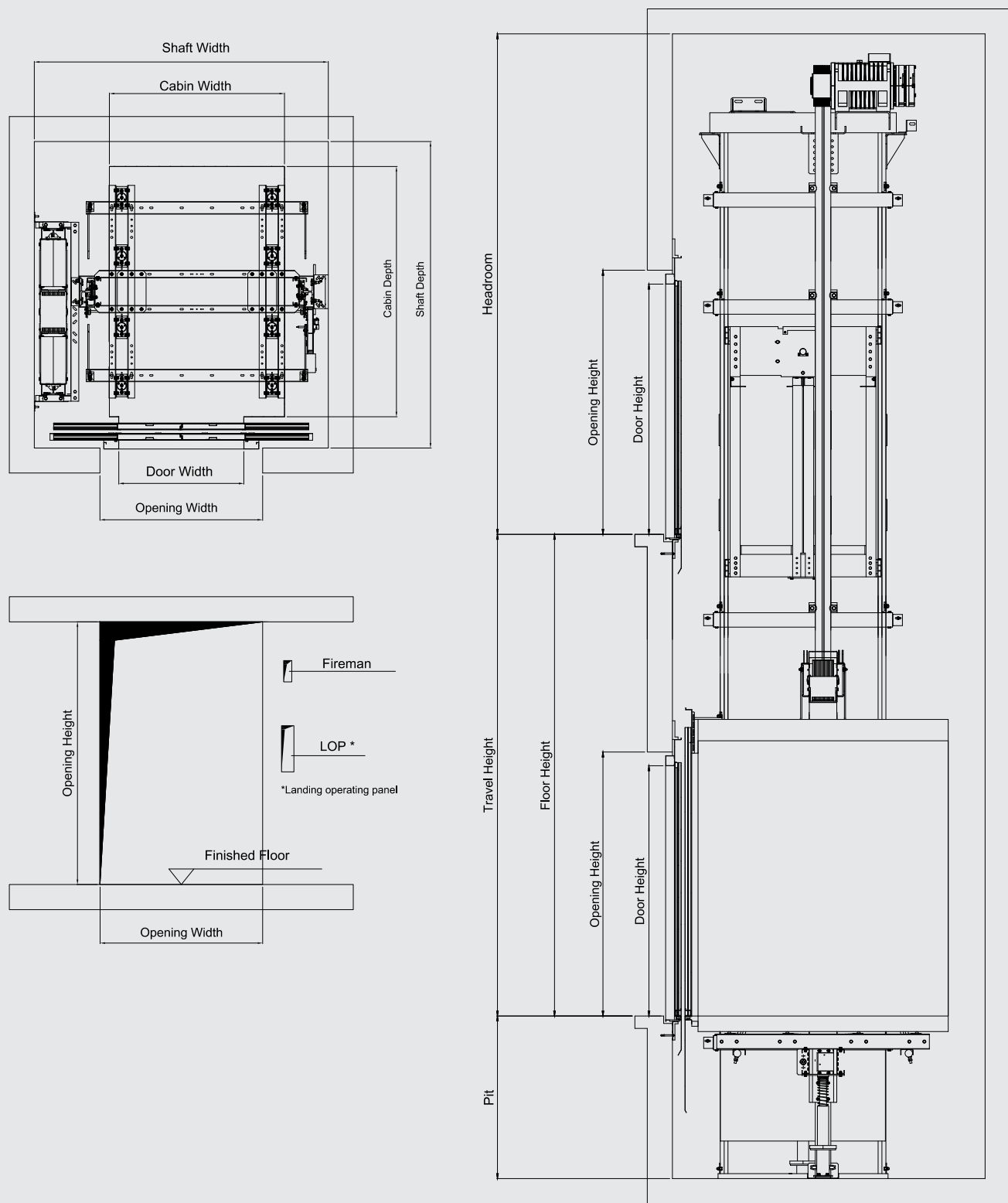
For Min clear headroom: 1. Load 400 < Q≤630kg, car internal height 2100mm, external height 2300mm, and the total height of the car bottom (car platform +MDF+ floor) shall not exceed 54mm.
2. Load 630 < Q≤1000kg, car internal height 2100mm high, external height 2340mm, and the total height of the car bottom (car platform +MDF+ floor) shall not exceed 92mm.
3. Choose 1100mm height baluster

Door: 1. CO= 2 Panel central open
2. SO= 2 Panel side open

Contact Kleemann Technology for more than the Max travel.
The above technical parameters are based on EN81.20



ATLAS GIGAS SP



ATLAS GIGAS SP

Person/ Rated Load (kg)	Car Dimen- sions (mm) CWxCD (mm)	Door CO (mm)	Loading Door Hole (mm)	Shaft Dimen- sions (mm) SW×SD (mm)	Max Rated Speed (m/s)	Door Height (mm)	Min Pit (mm)	Clear Headroom (mm)	Machine Room Height (mm)	Max Travel (m)	Max Stops	Max number of entrances
17/1275	1200*2300	SO:1000	1300	1900*2675	1.75	2000	v ≤ 1 m/s : 1100 1 m/s < v ≤ 1.6 m/s : 1270 1.6 m/s < v ≤ 1.75 m/s : 1315	1m/s : 3800 1.6m/s : 4000 1.75m/s : 4060	2100	45	30	2
		CO:850	1150	1900*2605	1.75	2000			2100	45	30	2
21/1600	1400*2400	SO:1200	1500	2100*2775	1.75	2000			2100	45	30	2
		CO:950	1250	2100*2705	1.75	2000			2100	45	30	2
24/1800	1500*2500	SO:1200	1500	2200*2875	1.75	2000			2100	45	30	2
		CO:1000	1300	2200*2805	1.75	2000			2100	45	30	2
27/2000	1500*2700	SO:1200	1500	2200*3075	1.75	2000			2100	35	30	2
		CO:1000	1300	2200*3005	1.75	2000			2100	35	30	2
33/2500	1800*2700	SO:1400	1700	2500*3075	1.75	2000			2100	20	30	2
		CO:1150	1450	2500*3005	1.75	2000			2100	20	30	2

For Min pit : 1. The total height of the car bottom (car platform +MDF+ floor) shall not exceed 113mm

- For Min clear headroom: 1. The external height of the car is 2340mm, and the total height of the bottom (car platform +MDF+ floor) is 100mm
2. Choose 1100mm height baluster
 3. 1M /s: overtravel 50mm, 1.6 or 1.75m/s: overtravel 95mm
 4. Use sliding shoes

- Door: 1. CO= 2 Panel central open
2. SO= 2 Panel side open

Contact Kleemann Technology for more than the Max travel.

The above technical parameters are based on EN81.20



MRL Elevator Operation Function

No	Name	Remark	No	Name	Remark	No	Name	Remark
Standard			Standard			Standard		
1	Fully Selective Control		21	Service Landing Setting at Will		41	Underspeed protection	
2	Inspection Travel		22	Indicating Symbols Setting for Landing Display		42	Leveling switch fault protection	
3	Self-rescue Travel		23	Attendant Service		43	CAN communication fault protection	
4	Testing Travel		24	Independent Travel		44	Safety shoe protection	
5	Clock Control		25	Display		45	Band-type brake switch contact detection protection	
6	Automatic Control for Door-opening Time		26	emergency return running for fire disaster		46	failure diagnosis of hoist way self-study	
7	Open the Door from This Landing Call		27	Automatic Correction in Landing Position Signals		47	motor thermal protection	
8	Pre-close the door by Door-closing Button		28	Elevator Lock-out		48	Door lock fault protection	
9	Open the Door by Door-opening Button		29	Protection against Door-opening outside Door Zones		49	Door lock disconnection protection	
10	Door selection		30	Light Gate Protection for Doors		50	Parallel connection running	
11	Leveling in Changing Destination Landing		31	Over-load Protection		51	leveling fine-tuning	
12	Cancel a Wrong Registration		32	Anti- nuisance at Light-load		52	door nudging with buzzer	
13	Clear Registrations at Changing Direction		33	Reversing Protection		53	door-opening and standby function at base station	
14	Direct Landing		34	Running time governor		54	floor blocking within time slot function	
15	By-passing Landing Calls on Full-load		35	fault protection for deceleration switch		55	external call board search function	
16	Power-off for Car Lighting and Fan at Stand-by		36	protection against terminal over travel		56	CAN communication interference evaluations	
17	Auto homing		37	Contact Detecting in Safety Relays and Contactors		57	evaluation about encoder interference	
18	Re-close door		38	Protection against safety circuit fault		58	car adjustment	
19	Historical Error Log		39	Master CPU Protection by WDT				
20	Self-tuning of Shaft Information		40	Overspeed protection				
Optional			Optional			Optional		
1	pre door-opening	Install SM-11-A board	9	earthquake response function		17	Voice Landing Forecasting	
2	door-opening and releveled	Install SM-11-A board	10	arrival gong on car		18	Load compensation	
3	Fireman Service Operation		11	arrival lamp on landing		19	door-opening holding button	
4	The Second Car Panel		12	Arrival gong on landing		20	service stop output function	
5	Car Panel by the Rear Door		13	Separate Control of Car Doors		21	IC card floor service control in car	
6	Car Panel for the Handicapped		14	VIP Priority Service		22	IC card car call service control at hall	
7	group control	Install SM-GC board	15	Emergency Levelling at Power-off		23	Shandong firefighting function	
8	community monitoring		16	switch for controlling service floor change-over				

MR Elevator Operation Function

No	Name	Remark	No	Name	Remark	No	Name	Remark
Standard			Standard			Standard		
1	Record and Dowload Errors		24	Self-tuning of Shaft Information		47	CAN communication fault protection	
2	Base Pole Lock		25	Service Landing Setting at Will		48	Safety shoe protection	
3	Balance Factor Monitoring and Evaluation		26	Indicating Symbols Setting for Landing Display		49	Band-type brake switch contact detection protection	
4	Motor over-heat protection		27	Attendant Service		50	failure diagnosis of hoist way self-study	
5	Fully Selective Control		28	Independent Travel		51	motor thermal protection	
6	Inspection Running		29	Display		52	Door lock fault protection	
7	Self-rescue Running		30	emergency return running for fire disaster		53	Door lock disconnection protection	
8	Testing Running		31	Automatic Correction in Landing Position Signals		54	Parallel connection running	
9	Clock Control		32	Elevator Lock-out		55	leveling fine-tuning	
10	Automatic Control for Door-opening Time		33	"Protection against Door-opening outside Door Zones"		56	door nudging with buzzer	
11	Open the Door from This Landing Call		34	Light Gate Protection for Doors		57	"door-opening and standby function at base station"	
12	Pre-close the door by Door-closing Button		35	Over-load Protection		58	"floor blocking within time slot function"	
13	Open the Door by Door-opening Button		36	Anti- nuisance at Light-load		59	"external call board search function"	
14	Door selection		37	Reversing Protection		60	"CAN communication interference evaluations"	
15	Leveling in Changing Destination Landing		38	Running time governor		61	"evaluation about encoder interference"	
16	Cancel a Wrong Registration		39	fault protection for deceleration switch		62	car adjustment	
17	Clear Registrations at Changing Direction		40	protection against terminal over travel		63	Intelligent Commissioning	
18	Direct Landing		41	Contact Detecting in Safety Relays and Contactors		64	Anti-sliding protection	
19	By-passing Landing Calls on Full-load		42	Protection against safety circuit fault		65	Unintentional Car Movement Protection	
20	Power-off for Car Lighting and Fan at Stand-by		43	Master CPU Protection by WDT		66	Door Bypass Function	
21	Auto homing		44	Overspeed protection		67	Door Circuit Detection	
22	Re-close door		45	Underspeed protection				
23	Historical Error Log		46	Leveling switch fault protection				
Optional			Optional			Optional		
1	pre door-opening	Install SM-11-A board	9	community monitoring		17	switch for controlling service floor change-over	
2	door-opening and releveled	Install SM-11-A board	10	earthquake response function		18	Voice Landing Forecasting	
3	Fireman Service Operation		11	arrival gong on car		19	Load compensation	
4	The Second Car Panel		12	arrival lamp on landing		20	door-opening holding button	
5	Car Panel by the Rear Door		13	Arrival gong on landing		21	service stop output function	
6	Car Panel for the Handicapped		14	Separate Control of Car Doors		22	IC card floor service control in car	
7	group control	Install SM-GC board	15	VIP Priority Service		23	IC card car call service control at hall	
8	Internet of Thing Monitoring	Install IoT Hardware	16	Emergency Levelling at Power-off		24	Shandong firefighting function	



Projects around the world

Being a reliable and innovative brand, renowned for specialising in unique and customised solutions, KLEEMANN is proud of its projects all around the world.

Through the years, KLEEMANN has developed a wide global network of customers and has fairly gained the position as a most valued lift manufacturer worldwide. KLEEMANN owns manufacturing facilities in Greece, Serbia and China and a wide network of companies around the world.

Thanks to the credibility, special innovative design and flexible and prompt service, as well as the importance to continuous development, KLEEMANN has earned the preference of the market.

For the people in KLEEMANN each project is a chance to go beyond conventional engineering and design!

KLEEMANN customers are unique and so are their projects!



Mary Rose Museum

SPECIFICATIONS

Country	United Kingdom
Location	Brighton
Type of product	Traction MRL lifts



Big Fashion Mall

SPECIFICATIONS

Country	Serbia
Location	Belgrade
Type of product	Atlas Gigas, Moving Walks, Escalators



Ferrari & Maserati exhibition centre

SPECIFICATIONS

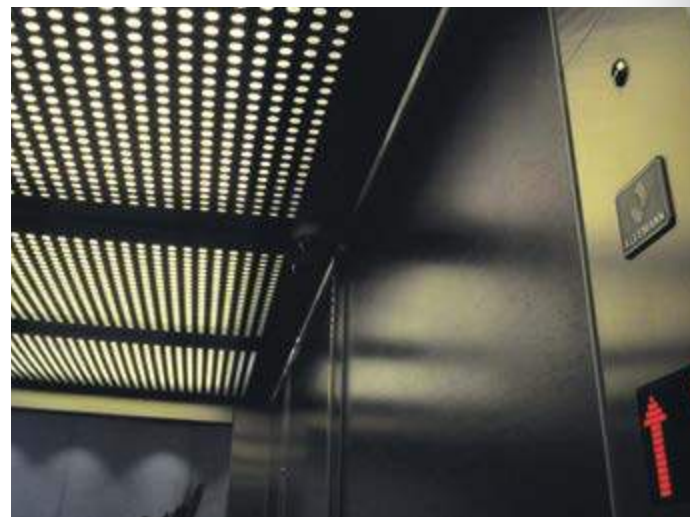
Country	Australia
Location	Sydney
Type of product	Atlas MRL lifts



Khartoum Corporate Centre

SPECIFICATIONS

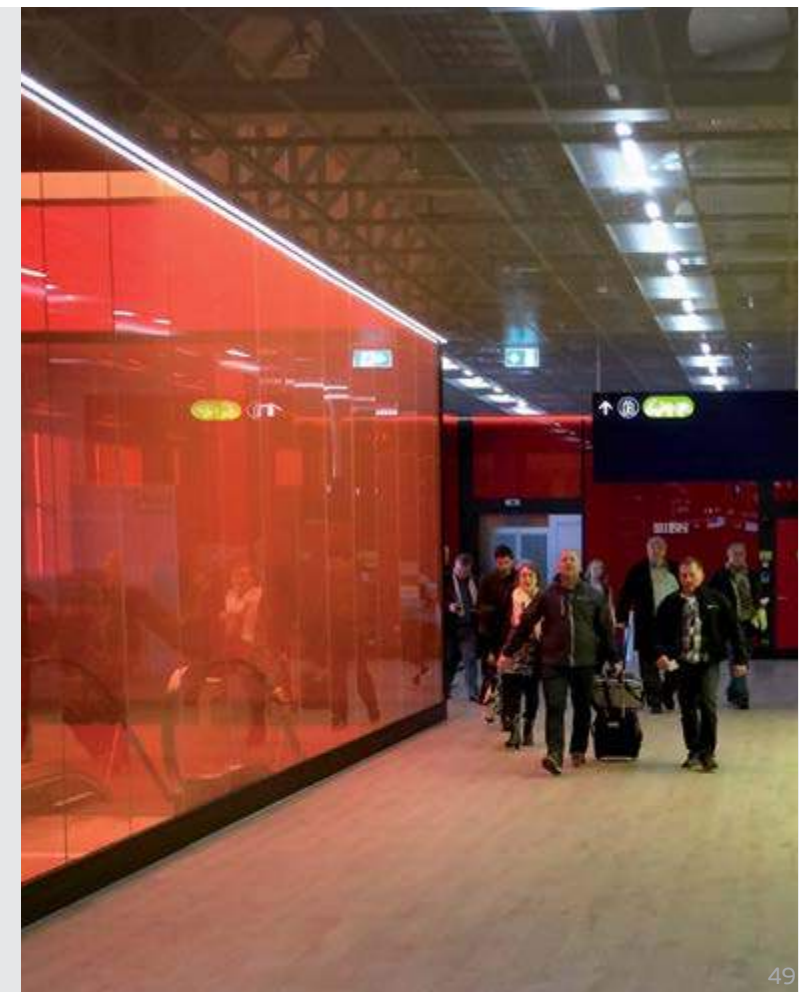
Country	Australia
Location	Macquarie Park
Type of product	Atlas Gigas



Keflavik airport

SPECIFICATIONS

Country	Iceland
Location	Keflavik
Type of product	Atlas Gigas, Escalators

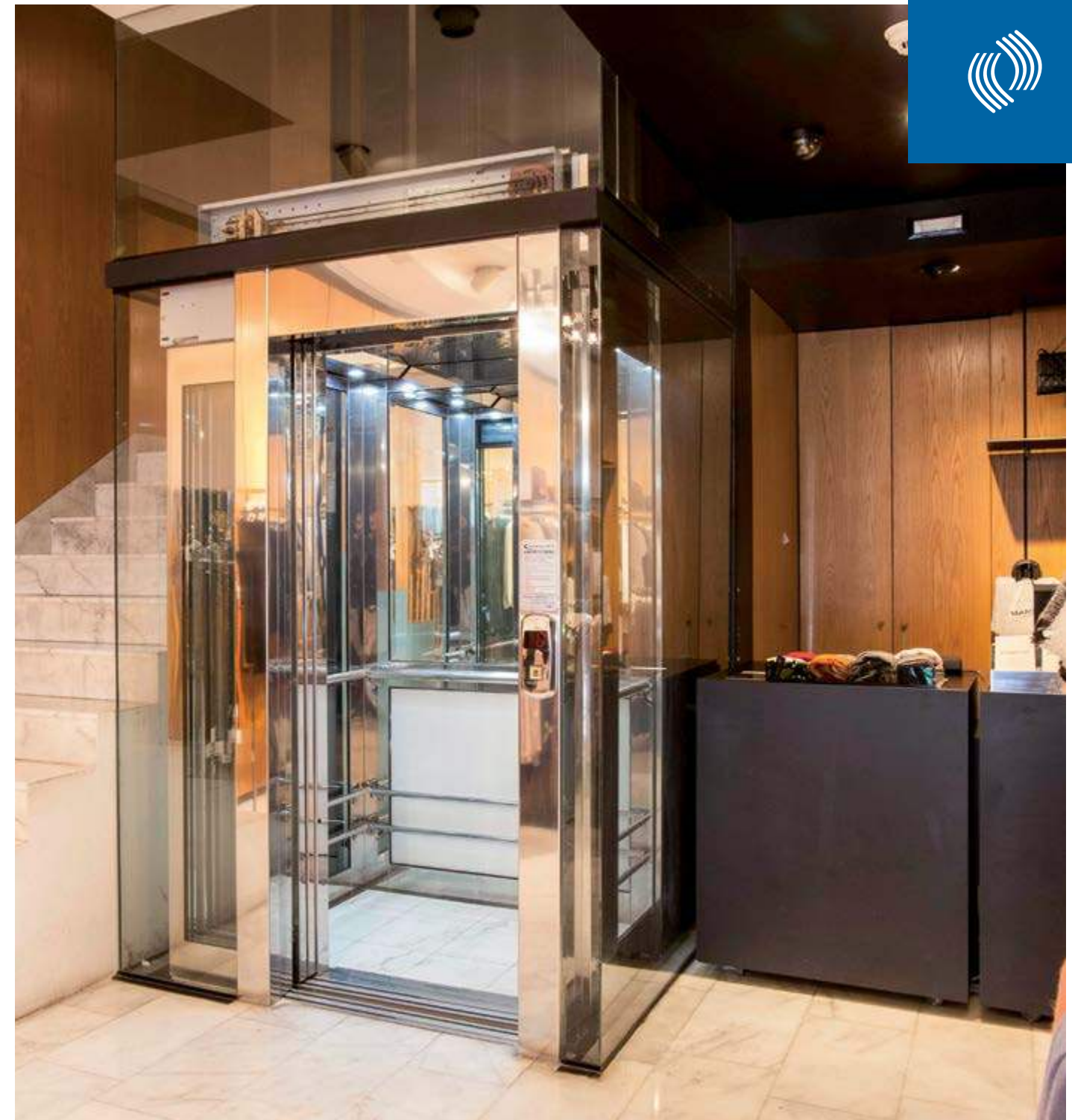




Museum of Contemporary Arts

SPECIFICATIONS

Country	Serbia
Location	Belgrade
Type of product	HADI lift



Mango store

SPECIFICATIONS

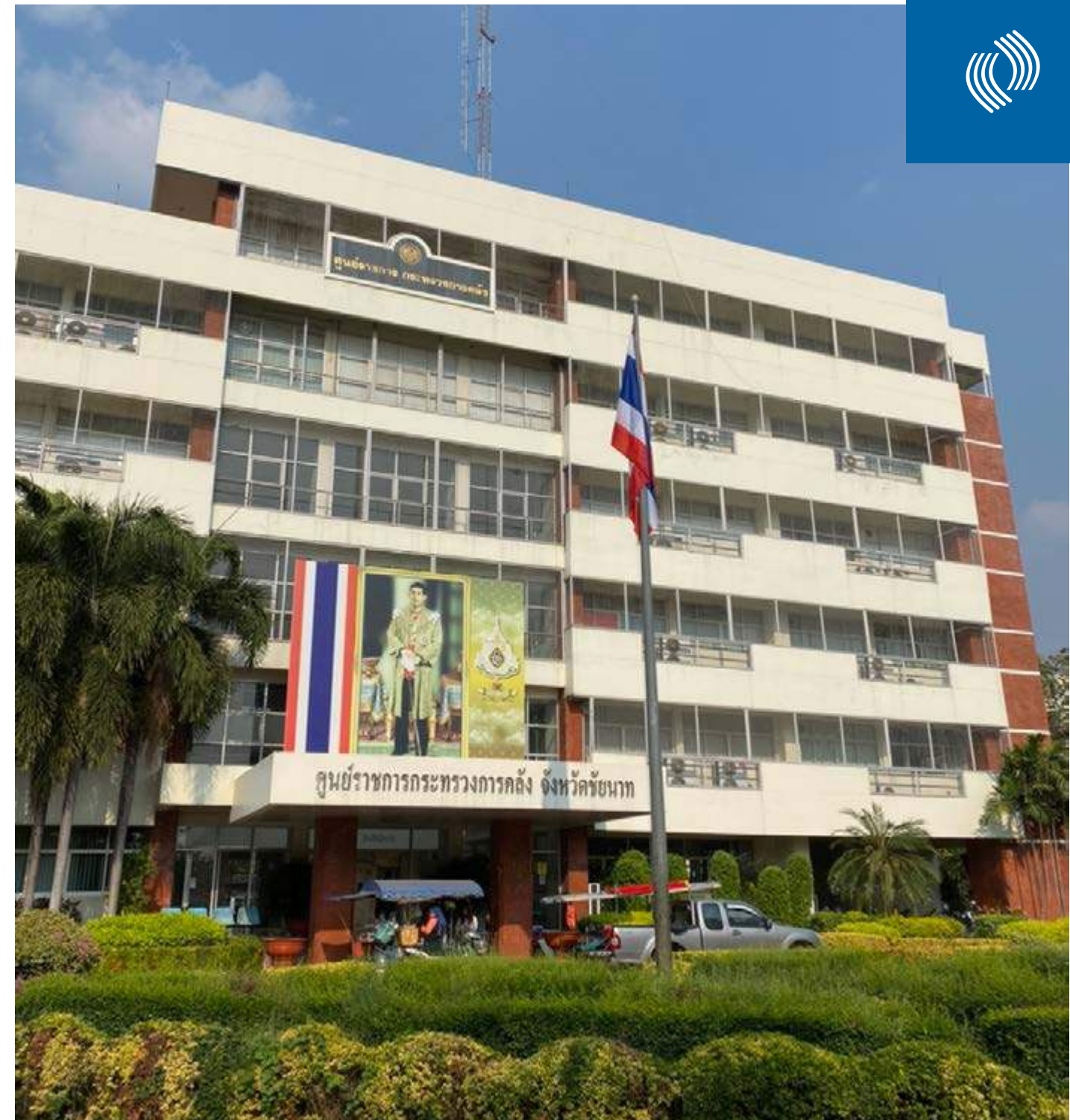
Country	Greece
Location	Rhodes
Type of product	Passenger lift



UWS Kingswood Campus-Library

SPECIFICATIONS

Country	Australia
Location	Kingswood
Type of product	Atlas Gigas



Ministry of Finance Office Compound

SPECIFICATIONS

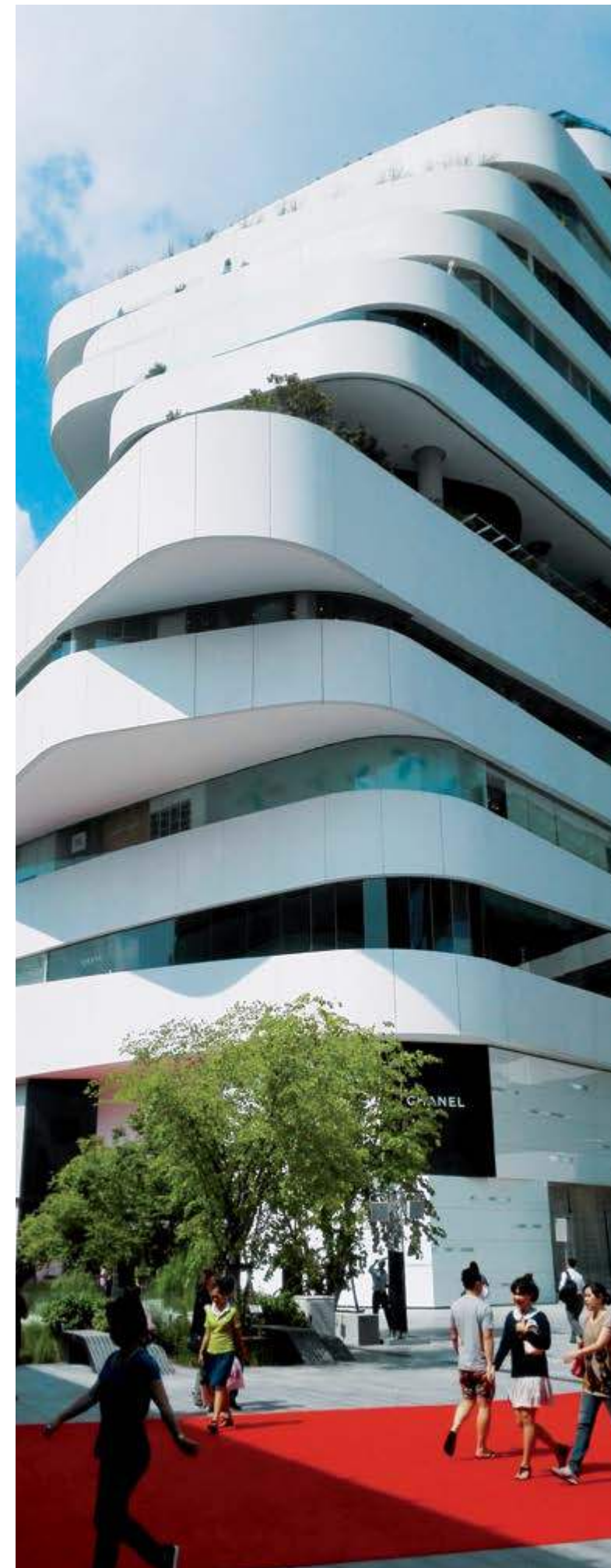
Country	Thailand
Location	Chainart Province
Type of product	Atlas RL



American Express Stadium

SPECIFICATIONS

Country	United Kingdom
Location	Brighton
Type of product	Atlas Basic



EmQuartier Shopping Mall

SPECIFICATIONS

Country	Thailand
Location	Bangkok
Type of product	Maison Lift



Green Gold

SPECIFICATIONS

Country	Croatia
Location	Zagreb
Type of product	Atlas Basic, Atlas Gigas



International airport

SPECIFICATIONS

Country	Greece
Location	Thessaloniki
Type of product	Panoramic passenger lifts



T4 Business Centre

SPECIFICATIONS

Country	Russia
Location	St. Petersburg
Type of product	Panoramic passenger lifts



Atrium Prestige Hotel

SPECIFICATIONS

Country	Greece
Location	Rhodes
Type of product	Traction passenger lifts





Palace of Congresses, Kremlin

SPECIFICATIONS

Country	RUSSIA
Location	Moscow
Type of product	Hydraulic freight lift(3.6m width x 8m depth x 4.7m height)



Kleemann marine solution



▲ Ferry



▲ Luxury yacht



▲ Cruise



▲ Freighter



▲ Oil Drilling Platform



“Greg Mortimer
Aurora”

GREG MORTIMER

SPECIFICATIONS

Country	China
Location	Nantong
Type of product	Marine Lifts



“Maran Gas
Hermès”

MARAN HERMES

SPECIFICATIONS

Shipyard	DMHI
Ship owner	Maran Gas
product	Crew Elevator



Kleemann Solution System

KLEEMANN stands out for its widest product range in the world



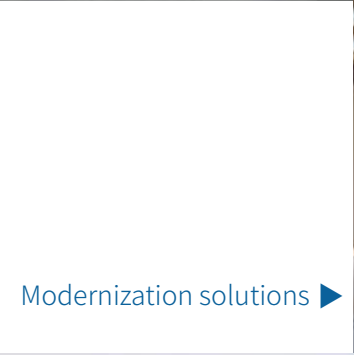
◀ Passenger Lifts



◀ Freight lifts



Escalators & moving walks ▶



Modernization solutions ▶



◀ Parking System



◀ Marine lifts

Greece KLEEMANN-Head Offices
Address: Kilkis Industrial Area , P.O. BOX
25 , 611 00 , Greece
Telephone: +30 2341 038 100
Email: headoffice@kleemannlifts.com
24/7 Support : +30 23410 38300

Serbia KLEEMANN Liftovi
Address: Obradovi a sokak 50, imanov-
ci, 22310 , Serbia
Telephone: +381 22 40 9000
Email: serbia@kleemannlifts.com
24/7 Support : +30 23410 38300

Turkey KLEEMANN Asansör
Address: Büyükbakkalköy Mahallesi
Aynur Sokak No:4, Turkey , 34858 , Tur-
key
Telephone: +90 216 570 05 00
Email: turkey@kleemannlifts.com
24/7 Support : +30 23410 38300

Russia KLEEMANN Russia
Address: Moscow Region Dzerzhinskiy,
Energetikov str., 20 , 140091 , Russia
Telephone: +7 495 283 00 01
Email: russia@kleemannlifts.com
24/7 Support : +30 23410 38300

Romania KLEEMANN Lift RO
Address: Strada Delea Nouă, nr.
38 , Etajul 2, sector 3 , 030925 , Romania
Telephone: +40 314 22 89 17
Email: romania@kleemannlifts.com
24/7 Support : +30 23410 38300

UK KLEEMANN Lifts UK
Address: Unit 8 Arena 14 , Charbridge
Lane , OX26 4SS , United Kingdom
Telephone: +44 (0) 1869 327 070
Email: uk@kleemannlifts.com
24/7 Support : +30 23410 38300

Australia KLEEMANN Australia
Address: Unit 1A, 2-6 Orion Road , LANE
COVE WEST , 2066 , Australia
Telephone: +61 2990 72066
Email: info@kleemannlifts.com.au
24/7 Support : +61 2 9907 2044

Germany KLEEMANN Aufzüge
Address: Adolf-Dembach-Str.
22A , Krefeld , 47829 , Germany
Telephone: +49 (0) 21519496030
Email: germany@kleemannlifts.com
24/7 Support : +49 (0) 173 37 39 417

France KLEEMANN Ascenseurs
Address: La Défense, Cours ValmyLe
Belvédère , 1-7 cours Valmy 92800
PUTEAUX , 92800 , France
Telephone: +33 140 90 30 55
Email: france@kleemannlifts.com
24/7 Support : +30 23410 38300

Cyprus KLEEMANN Service
Address: 17D Kyriakou Matsi, 1st Floor,
Off. 3 , 1082 , Cyprus
Telephone: +357 70 007785
Email: cyprus@kleemannlifts.com
24/7 Support : +30 23410 38300

Kleemann Lifts (China) Co. Ltd.
Address: No. 100 DengTa Road,
KSND, Jiangsu, China
Post code: 215316
Tel: +86 512 3682 3223



www.kleemannlifts.com
www.kleemannlifts.cn

While every effort has been to ensure the accuracy of the information in this brochure, KLEEMANN assumes no responsibility for omissions or typographical errors. Images are for demonstration purposes only. They are not suitable for construction/building purposes, nor feasibility studies.

Copyright © KLEEMANN 2019

